

### Second Round Water Sale

North-east farmers who have yet to secure irrigation rights in the proposed Scottsdale Irrigation Scheme will have a second chance in September 2015 to buy rights that could make the scheme a reality.

Tasmanian Irrigation's project manager for the scheme, Andy Corbould, says farmers need to commit to another 3065 ML of water if the scheme is to go ahead.

The SIS Business Case was developed on the basis of the October 2010 survey in which 90 landowners expressed interest in purchasing a total of 11,600 ML of water. Due to limitations of dam capacity and available water supply, a scheme was designed which would deliver 8,600 ML per season with 95% average reliability. At the close of water sales in November 2014, 81 applications totalling 3,780 ML were received. Of these, 16 applications totalling 395 ML are currently unable to be accepted as they are situated on branch lines which are unviable at current demand

levels. TI will advise the affected applicants and discuss with them the additional water required to be purchased to make the branch line viable. Therefore, current acceptable applications total 3,385 ML from 65 landowners.

For the SIS to proceed to construction and operation, a water sales threshold of 6,450 ML (i.e. 75% of scheme capacity) is required to be achieved. At present, current water sales applications are 3,065 ML short of this target. TI is seeking further water sales to achieve the threshold target and will be conducting a second round water sale around September 2015.

Andy said contracts will remain valid for those who have already committed to buy. They do not need to apply again, unless they want more. TI has extended the date for its final acceptances to 31 December 2015.

The Scottsdale Irrigation Scheme takes in the Great Forester and Brid river catchments, as well as parts of the Boobyalla, Tomahawk and Little Forester catchments. The potential irrigable area is 17,366 ha, of which only 25 per cent is being irrigated at the moment.

TI proposes a dam on Camden Rivulet, a tributary of the St Patrick's River, to store winter flows. In the summer, water would be pumped

to the Sidling Range and then flow by gravity, via a mini-hydro station, to the existing Headquarters Road dam.

Water allocated to this scheme would then flow through a 59-km underground pipeline around Scottsdale. There would also be direct releases to boost flows in the Great Forester River, Hurst Creek and Brid River for direct-take and a 10-km pipeline from Waterhouse.

If the second round water sale is successful, tendering and construction could possibly commence in the first half of 2016. Construction should be completed and first irrigation supplies delivered in summer 2017/18.

TI and SIS Working Group remain confident that the strong underlying commitment within the north east community toward irrigation and the economic development of the region will get the scheme across the line.



**Australian Government**

SUPPORTED BY



**Tasmanian  
Government**

### Scheme Contacts

**Andy Corbould**

Project Manager

0417 341 141

andy.corbould@tasirrigation.com.au

**Tas Rainbow**

SIS Working Group Chairman

0418 123 028

vrainbow@bigpond.net.au



This newsletter contains information of a general nature and reasonable care has been taken to ensure accuracy at the time of publication. Scheme details and policies may change and individual circumstances may vary. This newsletter should not be relied upon as a basis of individual decision-making. For more information and details regarding the articles in this issue, please contact:

**Tasmanian Irrigation Pty Ltd**, PO BOX 84 Evandale, TAS, 7212.

Ph: 03 6398 8433 [www.tasirrigation.com.au](http://www.tasirrigation.com.au)

If you would prefer to receive this newsletter electronically please email [amy.grubb@tasirrigation.com.au](mailto:amy.grubb@tasirrigation.com.au)



**Scottsdale Irrigation Scheme**

Copyright © Tasmanian Irrigation

July 2015



# Tasmanian Irrigation

## Scottsdale Newsletter - Page 2.

### ZONES

The following Zones are Trunk Zones:

- Austin 1 (A1)
- Austin 2 (A2)
- Camden 1 (C1)
- Camden 2 (C2)
- Jetsonville 1 (J1)
- Jetsonville 2 (J2)
- Lietinna 1 (L1)
- Lietinna 2 (L2)
- Lietinna 3 (L3)
- Mt Zion 1 (Z1)
- Mt Zion 2 (Z2)
- Scottsdale 1 (S1)
- Scottsdale 2 (S2)
- Upper Brid 1 (U1)
- Upper Brid 2 (U2)
- Waterhouse 1 (W1)
- Waterhouse 2 (W2)
- Great Forester River Zone (GR)

The following Zones are Spur Zones:

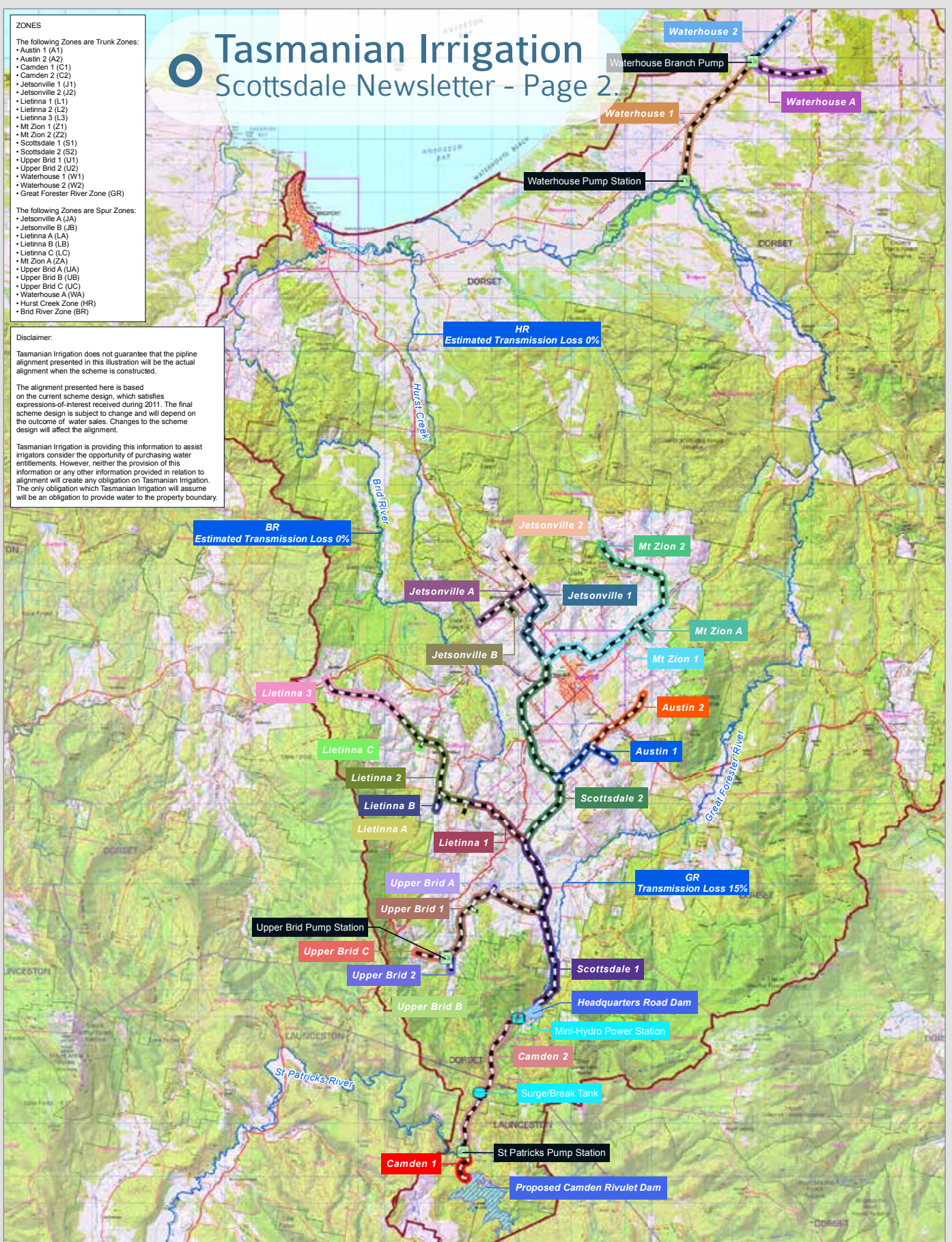
- Jetsonville A (JA)
- Jetsonville B (JB)
- Lietinna A (LA)
- Lietinna B (LB)
- Lietinna C (LC)
- Mt Zion A (ZA)
- Upper Brid A (UA)
- Upper Brid B (UB)
- Upper Brid C (UC)
- Waterhouse A (WA)
- Hurst Creek Zone (HR)
- Brid River Zone (BR)

### Disclaimer:

Tasmanian Irrigation does not guarantee that the pipeline alignment presented in this illustration will be the actual alignment when the scheme is constructed.

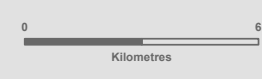
The alignment presented here is based on the current scheme design, which satisfies expressions of interest received during 2011. The final scheme design is subject to change and will depend on the outcome of water sales. Changes to the scheme design will affect the alignment.

Tasmanian Irrigation is providing this information to assist irrigators consider the opportunity of purchasing water entitlements. However, neither the provision of this information or any other information provided in relation to alignment will create any obligation on Tasmanian Irrigation. The only obligation which Tasmanian Irrigation will assume will be an obligation to provide water to the property boundary.



	Proposed pump station
	Proposed mini-hydro power station
	Proposed surge/break tank
	Proposed pipeline alignment
	Proposed draft Irrigation District

## Scottsdale Irrigation Scheme Trading Zones



Map Scale 1:130,000  
When printed at A3

Map No: SIS-M1235-001  
Version No: 001  
Date: 23/10/2014  
Map Created by: MP  
Tasmanian Irrigation



Basemap supplied by TASMAR © State of Tasmania. Base data from the LIST © State of Tasmania.

DISCLAIMER: This map is for informational purposes only. It should not be relied upon to establish with certainty the location of any of the features represented on it, either absolutely or in relation to



Scottsdale Irrigation Scheme  
Copyright © Tasmanian Irrigation  
July 2015

