



# Don Irrigation Scheme

## Business Case Approved

February and March have continued to be busy with Jacob Tierney transitioning to Project Manager following Tegan Lovells finalization of water sales. The project Business Case has recently been approved by Government with efforts now focused on gaining all required approvals to commence construction. Following acceptance of water delivery contracts changes are now being made to optimize the design. There remains some spare capacity in most of the pipelines so if there is any further interest in purchasing water call Jacob before the middle of April to enquire. An update meeting is planned to be held at Barrington Hall on the 8th of April at 6pm.

## Farm Water Access Plans

Irrigators using water from schemes developed by Tasmanian Irrigation are required to have in place Farm Water Access Plans (Farm WAPs) prior to delivery from a scheme. Farm WAPs are a practical way to address land, water and biodiversity sustainability issues within the Tasmanian farming landscape. They are property-specific plans which demonstrate that the intended application of irrigation water will be sustainable and highlight best management practices for the property.

The minimum requirement is to develop a Farm WAP to cover the area of land and dams directly affected by the proposed irrigation, using soil, water and biodiversity planning tools.

Farm WAPs are completed by pre-qualified consultants to ensure the Farm WAP is developed by someone suitably qualified, competent, with appropriate experience.

Once developed amendments can be arranged by the irrigator, and updates regarding best management practices can occur, however they are designed to be flexible with cropping/land use changes over the life of the scheme. The Farm WAP process is managed by the TI Environment Team who will be in contact with Irrigators prior to commissioning of the scheme.

## Approvals

TI has been be contacting landholders to discuss field inspections of the revised pipeline route to enable the approval process to be completed.

The approval process involves the finalisation of ecological and heritage surveys, geotechnical investigations and local government approval. Once these tasks are complete tenders will be issued for construction.

to brief the group on the plan ahead with a particular focus on the work required to be completed prior to construction commencing. This meeting is planned to be held at Barrington Hall on the 8th of April at 6pm.

## Scheme Contacts

### Don Irrigator Representative Committee (IRC)

Melina Burbury (Chair)

0417 519 093

Allan Boyce

0427 303 311

Hamish Yaxley

0437 120 590

Marcus Harris

0407 872 024

Michael Badcock

0438 282 439

Neil Armstrong

0419 180 095

Randal Parker

0408 241 786

### TI Project Manager

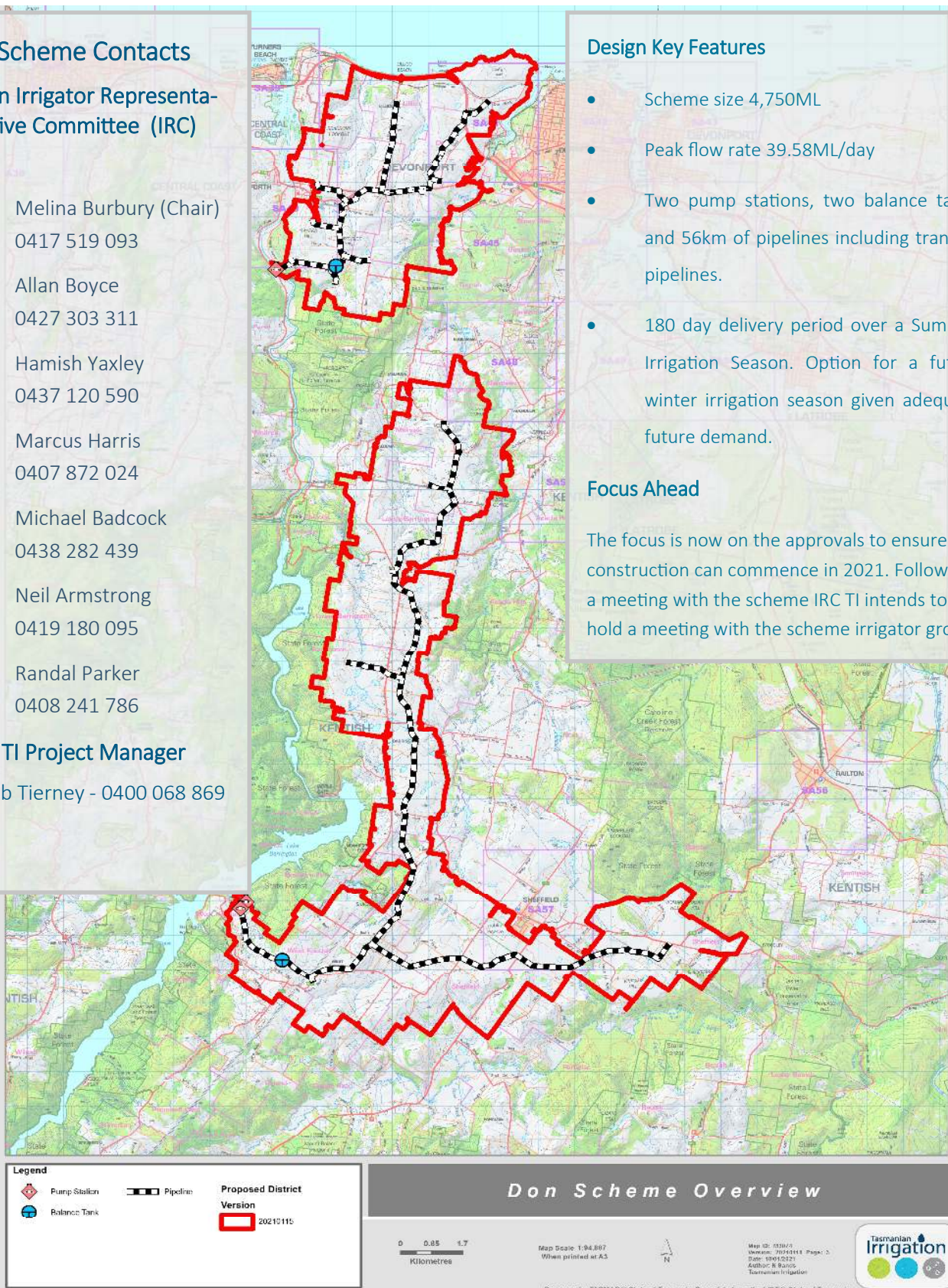
Jacob Tierney - 0400 068 869

## Design Key Features

- Scheme size 4,750ML
- Peak flow rate 39.58ML/day
- Two pump stations, two balance tanks and 56km of pipelines including transfer pipelines.
- 180 day delivery period over a Summer Irrigation Season. Option for a future winter irrigation season given adequate future demand.

## Focus Ahead

The focus is now on the approvals to ensure construction can commence in 2021. Following a meeting with the scheme IRC TI intends to hold a meeting with the scheme irrigator group.



This newsletter contains information of a general nature and reasonable care has been taken to ensure accuracy at the time of publication. Scheme details and policies may change and individual circumstances may vary. This newsletter should not be relied upon as a basis of individual decision-making. For more information and details regarding the articles in this issue, please contact:

Tasmanian Irrigation Pty Ltd, PO Box 84 Evandale, TAS, 7212.

Ph: 03 6398 8433 [www.tasirrigation.com.au](http://www.tasirrigation.com.au)

If you received this newsletter by email but would prefer to receive it via post please contact **Jacob Tierney** at [jacob.tierney@tasirrigation.com.au](mailto:jacob.tierney@tasirrigation.com.au)