

Disclaimer:

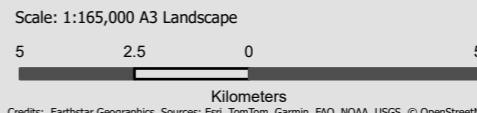
Tasmanian Irrigation expressly disclaims any obligation or liability with respect to the pipeline alignment shown in this illustration. The alignment is based on the preliminary design outlined in the current business case and is subject to change depending on various factors, including the outcome of water sales and final design. As such, the final pipeline alignment may differ from what is shown.

The information provided is for informational purposes only and is intended to assist prospective irrigators in their decision-making process regarding the potential purchase of water entitlements. It should not be construed as a representation, offer, or guarantee by Tasmanian Irrigation. Tasmanian Irrigation is under no obligation to adhere to the depicted alignment, nor is it bound by any details contained herein.

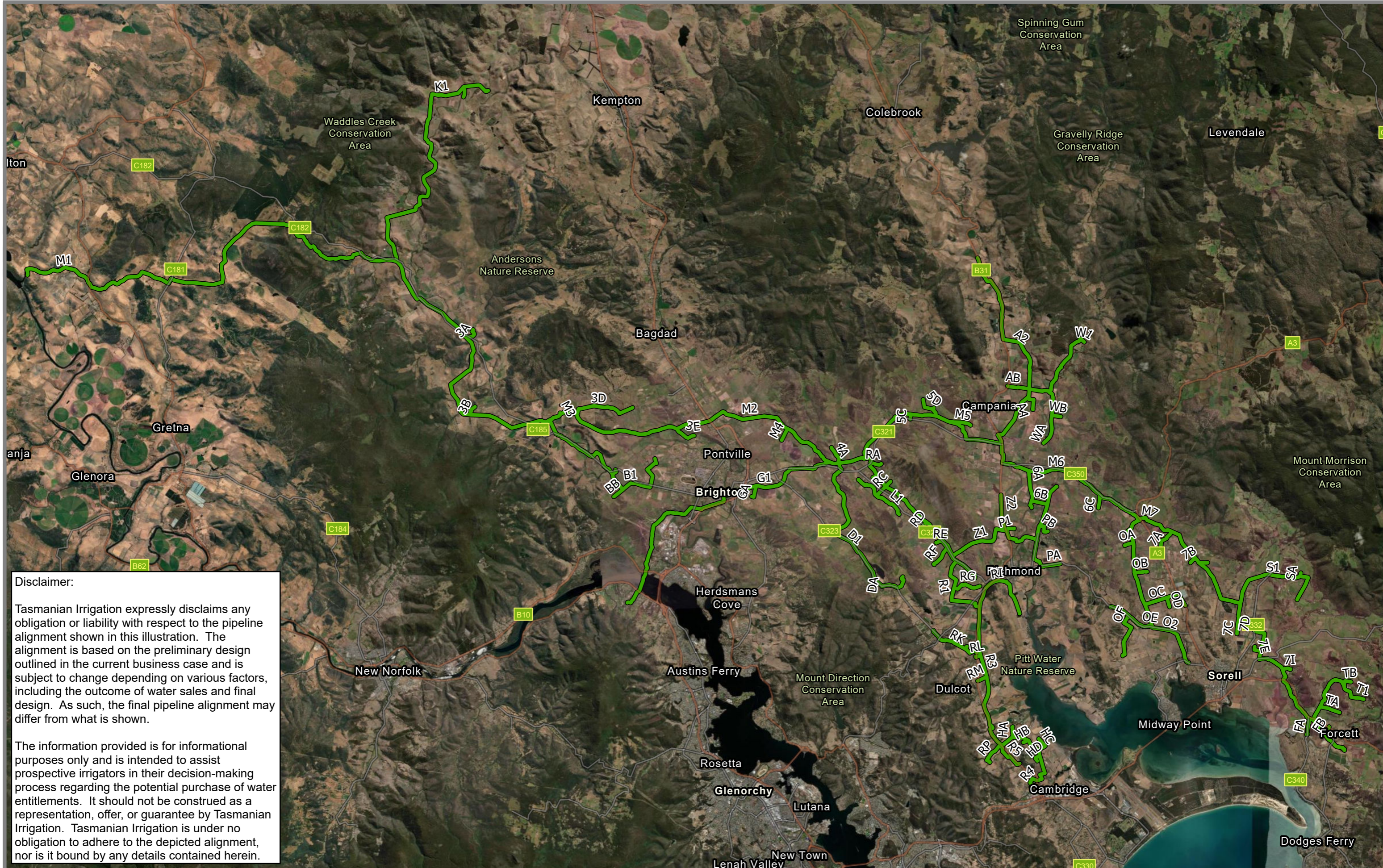
GSEIS - Indicative Zone Capacity Pre Water Sales February 2025

Summer Delivery Period: October to March
 Indicative zone capacity within current design parameters

- High likelihood of availability
- Medium likelihood of availability
- Low likelihood of availability



ID: M3364 GSEIS Zone Capacity Overview
 Date: 21/02/2025
 Spatial Reference: GDA 1994 MGA Zone 55
 Author: R Webb
 Tasmanian Irrigation



Disclaimer:

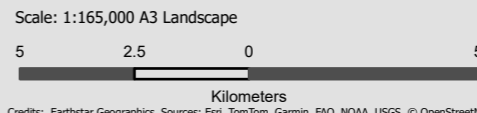
Tasmanian Irrigation expressly disclaims any obligation or liability with respect to the pipeline alignment shown in this illustration. The alignment is based on the preliminary design outlined in the current business case and is subject to change depending on various factors, including the outcome of water sales and final design. As such, the final pipeline alignment may differ from what is shown.

The information provided is for informational purposes only and is intended to assist prospective irrigators in their decision-making process regarding the potential purchase of water entitlements. It should not be construed as a representation, offer, or guarantee by Tasmanian Irrigation. Tasmanian Irrigation is under no obligation to adhere to the depicted alignment, nor is it bound by any details contained herein.

GSEIS - Indicative Zone Capacity Pre Water Sales February 2025

Winter Delivery Period: April to September
 Indicative zone capacity within current design parameters

High likelihood of availability



ID: M3364 GSEIS Zone Capacity Overview
 Date: 21/02/2025
 Spatial Reference: GDA 1994 MGA Zone 55
 Author: R Webb
 Tasmanian Irrigation