

Sassafras Wesley Vale Augmentation (SWISA)

Total Project Cost: \$124.2 million

Federal Government Funding Allocation: \$62.1 million

State Government Funding Allocation: \$31.05 million

Irrigator Funded Portion through the sale of water entitlements: \$31.05 million (95% sold)

Water Supply and Distribution

The expected total scheme capacity is 14,860ML with water delivered over a 150-day irrigation season opening in November and closing in late March. The scheme flow rate is based on 150 days giving irrigators some flexibility with their take.

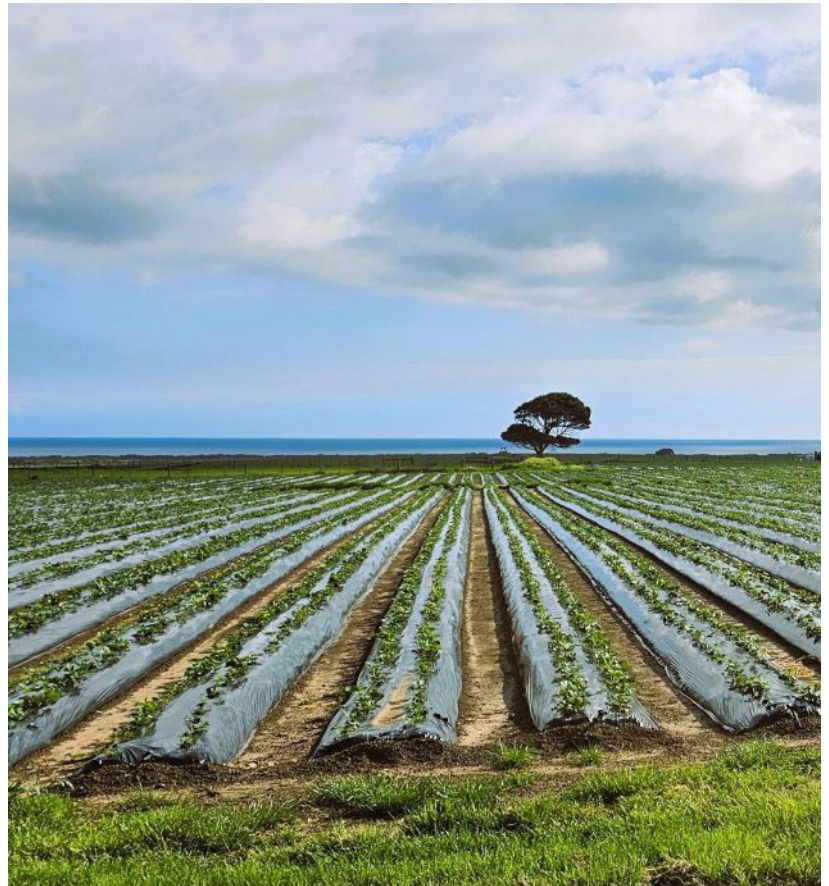
Economic Impact

SWISA will create approximately 60 jobs during the construction phase and about 210 direct and indirect full-time employment positions once fully operational.

The project will more than double the amount of high-surety irrigation water available to farmers in Tasmania's North-West, create an estimated 120 jobs and underpin \$28.3 million in on-farm investment.

Infrastructure and Operations

SWISA includes a pipeline of approximately 102 kilometres and two pump stations.



The Sassafras Wesley Vale Irrigation Scheme commenced operations in November 2012, delivering 5,660 ML to irrigators in the Sassafras, Harford, Thirlstane, Moriarty, Wesley Vale, Northdown, Pardoe and East Devonport areas in North West Tasmania.

In 2019, a survey was conducted in which 60 irrigators expressed interest for additional water. The proposed augmentation has the capacity to deliver an additional 9,200ML of high-surety irrigation water.

Federal environmental approvals have been finalised and the tender process for the construction contract closed 2 September. It is anticipated that construction will start in late 2025.

The project will complement other existing schemes in the region, including the Don scheme, the Dial Blythe, and the Kindred North Motton Schemes.

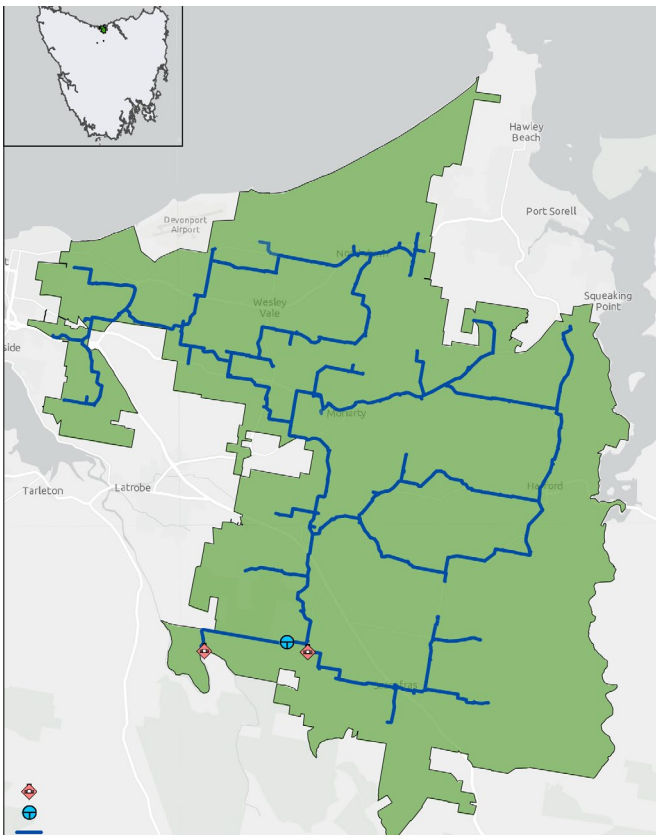
94
irrigators



Last Updated: September 2025

Sassafras Wesley Vale Augmentation (SWISA)

Scheme map



Fast facts

Capital cost	\$124.2 M
State Government Contribution	\$31.05 M
Federal Government Contribution	\$62.10 M
Irrigator Contribution	\$31.05 M
Forecasted number of irrigators	94
Landowners impacted by construction	180
Expected final capacity	14,860 ML
Current water entitlement take up	95% or 8,770 ML
Water entitlement sales price	\$2,090 / ML
Irrigation season duration	150 days
Approximate length of pipeline	102 km
Pump stations	2
Balance tank	1

Key dates

Funding approved	Apr 23
EPBC approval	Aug 25
Start of construction	Nov 25
Practical completion	
Pipelines and pump stations	Aug 27
Commissioning	Oct 27

Get in Touch:

Phone: (03) 6398-8433

Email: enquiries@tasirrigation.com.au

www.tasmanianirrigation.com.au