

March 2020

Tasmanian  
Irrigation

Working with Producers to Grow the Wealth of Tasmania

# Fingal Irrigation Scheme

## Continued scheme support

The Fingal Irrigation Scheme (FIN) forms one of Tasmanian Irrigations (TI) Tranche Three suite of irrigation schemes. Expressions of interest have continued to demonstrate strong support for the scheme and now total 10,525ML.

## Scheme update

### Engineering and dam sites

The next steps for the scheme at the time of the last newsletter in November 2019 was focussed on engineering modelling to understand the most efficient way

to feasibly supply as much of the demonstrated demand as possible.

The preliminary scheme design included a two-dam riparian delivery system with the main dam situated near Evercreech utilising water from the South Esk and the second located near the head of the Royal George utilising water from the St. Paul's River.

Further work conducted on the design of the scheme after the increase in expressed interest has resulted in changes to the initial preliminary design of the scheme.

The main dam site at Evercreech is inefficient at the larger storage volumes required to service the increased demand within the region. In response to this the team undertook a desktop analysis and identified nine potential dam sites in the region to further investigate. High level in-field assessments of five of these nine sites were conducted prior to Christmas and a new preferred site was established just upstream of Fingal. This new storage site provides a larger and more economic solution for the scheme.

Any supply to the Royal George valley will now be via a pumped pipeline from the South Esk River the same as any supply to St. Marys. This approach provides confidence around delivery throughout dry summer periods when reliance on small watercourses is often problematic due to low or no base flows when water is released.

## Pipeline to Prosperity Update

Tasmanian Irrigation has successfully constructed 10 irrigation schemes as part of Tranche One and delivered a further four under Tranche Two with the fifth currently being commissioned. The combined capacity of these schemes allows the delivery of in excess of 150,000 ML of high reliability irrigation water annually.

Of the current 10 schemes being investigated as part of Tranche Three five are being progressed as part of phase one. These five schemes consist of Don, Northern Midlands, Tamar, Sassafras Wesley Vale Irrigation Scheme Augmentation and Fingal.

Don is the first scheme to reach the Preferred Option stage of development with the Preferred Option public launch held on 10 March 2020. The remaining four schemes are at various stages of working towards Preferred Options.



Fingal Irrigation Scheme

Copyright Tasmanian Irrigation - March 2020

Page 1

## Enterprise mix and margin assessment

Due to the expressions of interest for the scheme more than doubling from the initial concept and the introduction of new areas to the scheme the decision has been made to conduct a second enterprise mix and margin assessment for the scheme.

As part of this work a proportion of those who expressed interest in the scheme will be surveyed by an external consultant. The purpose of this is to understand current agricultural systems and to establish what applicants are planning to use the scheme water for should water become available moving forward.

## Next Steps

The next step for the scheme is the finalisation of a Preferred Option for the scheme in the next couple of months. Once approved by the Board this will be presented to the public for feedback. Once this feedback period has concluded any valid commentary will be considered prior to the scheme progressing to water sales .

The Preferred Option is currently expected to be

### Covid-19 & Tasmanian Irrigation

During these uncertain times we wish to note that we are trying to keep things as normal as we can. We are still working, albeit remotely.

In order to keep our staff and customers safe much of our communication over the next few months will be electronic and ask that you provide email and/or phone contact details if you haven't already so we can keep in touch.

## Scheme Contacts

### Fingal Irrigator Representative Committee

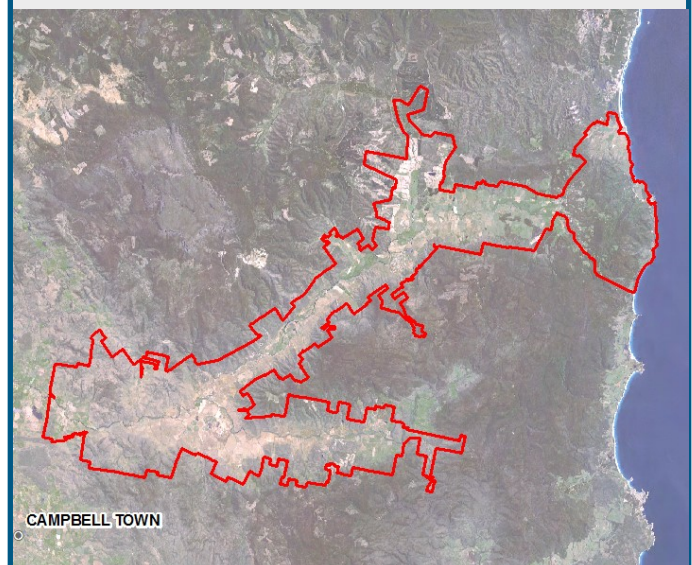
|                             |              |
|-----------------------------|--------------|
| Humberston McKenzie (Chair) | 0428 741 474 |
| Jamie Loane                 | 0419 394 572 |
| Richard Gee                 | 0419 357 386 |
| Alistair Crisp              | 0438 570 241 |
| Douglas Loane               | 0408 360 615 |
| Michael Legge               | 0408 037 989 |
| Rob O'Connor                | 0417 337 241 |

### TI Project Manager

Tegan Lovell - 0407 678 314

Or [Tegan.Lovell@tasirrigation.com.au](mailto:Tegan.Lovell@tasirrigation.com.au)

## Fingal Area of Interest



A map and additional information on the Fingal Irrigation Scheme (FIN) can be found on the TI website at:

[www.tasmanianirrigation.com.au](http://www.tasmanianirrigation.com.au)

This newsletter contains information of a general nature and reasonable care has been taken to ensure accuracy at the time of publication.

Scheme details and policies may change and individual circumstances may vary. This newsletter should not be relied upon as a basis of individual decision-making. For more information and details regarding the articles in this issue, please contact:

Tasmanian Irrigation Pty Ltd, PO Box 84 Evandale, TAS, 7212.

Ph: 03 6398 8433 [www.tasirrigation.com.au](http://www.tasirrigation.com.au)

If you would prefer to receive this newsletter via post please contact Tegan Lovell on 0407 678 314 or at [Tegan.lovell@tasirrigation.com.au](mailto:Tegan.lovell@tasirrigation.com.au)